



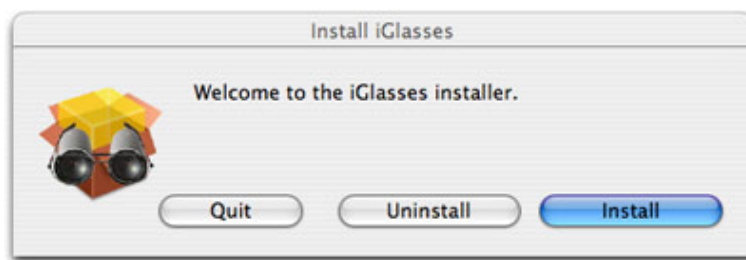
iGlasses Manual

Installing iGlasses:

If you're just trying out iGlasses, download the free demo installer.

If you've purchased iGlasses, download the full version installer. (You will be given access to the full version installer upon purchasing.)

After downloading, you'll find the iGlasses Installer in your downloads folder or on your Desktop. Double-click the installer, and then follow the on-screen instructions. Like many installers, you'll be asked for an administrator password. (This is the password you chose when first setting up your Mac.)

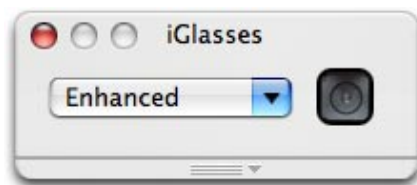


Uninstalling iGlasses:

Simply run the installer as described above and use the Uninstall button.

Using iGlasses:

After installing, the iGlasses Window will appear in compatible programs. If you close the window, it can be opened again by selecting "iGlasses Settings" from the menu bar. (It's in the Video menu in iChat and the File menu in most other applications.)

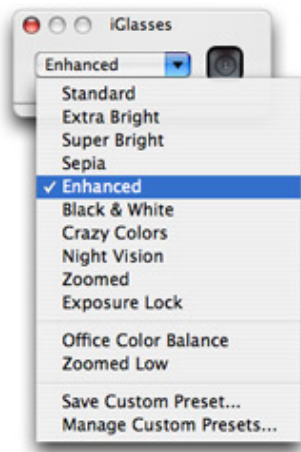


The iGlasses Window's position and opened/closed status is remembered for each application you use.

When the application starts showing video from your camera, the iGlasses Window will activate.

Using Preset Settings:

The following preset settings are available in the menu:



Standard: Select this option to return the video image to normal factory settings.

Extra Bright: Provides extra brightness for conferencing in darker than normal conditions.

Super Bright: Provides lots of extra brightness for use in dark rooms.

Enhanced: Gives a sharper image with deeper colors.

Black & White: For that artsy look.

Sepia: For an old time look.

Crazy Colors: Just for fun, cycles through the rainbow of colors.

Night Vision: For video conferencing in total darkness!

Macro Focus: For getting up close and personal with your iSight (available only with the external iSight).

Zoomed: Quickly zooms in to get a closer view.

Exposure Lock: Disables the Built-in iSight's automatic exposure and white balance.

Don't forget that choosing Standard will always put your camera settings back to normal.








Your chosen adjustments will be restored each time you use your cameras.



Advanced Settings

To access the advanced settings, click the camera icon or pull down the handle on the bottom of the window. A menu will appear listing the available options for your camera. (The list will differ depending on your camera type.)

The following options are available:

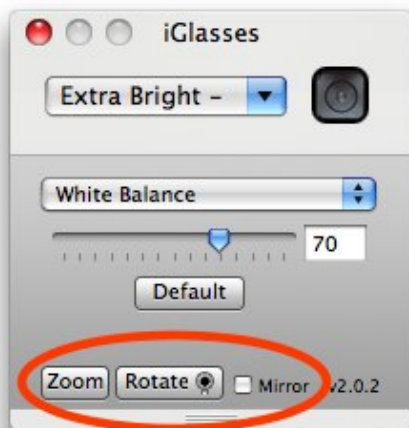
Brightness	Turn the brightness up or down. On some iSights, you can toggle manual/automatic Brightness.
Color Balance	Take control over your colors or choose automatic adjustment. By selecting a location in the color window, you can modify the camera's color range.  Built-in iSight Only
Exposure Lock	Lock the new built-in iSight's auto-exposure.  Built-in iSight Only
Colorize	Like black and white but color tinted.
Contrast	Turn the contrast up or down.
Edge Enhancement	Makes for a sharper picture.  External iSight Only
Manual Focus	Control your external iSight's motorized focus or use auto-focus.  External iSight Only
Gain	Control your external iSight's gain levels.  External iSight Only
Hue	Create fun effects by shifting your colors.
Saturation	Increase or decrease the amount of color in your video.
Sharpness	Makes for a sharper picture.
Shutter	Control your external iSight's shutter speed.  External iSight Only
SW Brightness	Turn the brightness up or down using software-side enhancement.
SW Contrast	Turn the contrast up or down using software-side enhancement.
Temperature	Control your external iSight's color temperature setting.  External iSight Only
Threshold	A fun black and white cartoon mode.
White Balance	When you're looking a little blue, quickly fix your colors.
Zoom and Pan	Use the slider to zoom in and out. Drag the thumbnail image to pan around. Select to "Animate Transitions" to control whether selecting preset zoom settings looking like camera movements or simply jump directly to the new position. You can use your Apple Remote to control the pan and zoom when the Zoom/Pan settings panel is open.

Saving Custom Presets:

After adjusting any combination of the settings described above, you can save those settings as custom presets. To do this, select Save Custom Preset from the main iGlasses menu. You can rename and delete custom presets by selecting Manage Custom Presets.

Zoom, Rotate & Mirror:

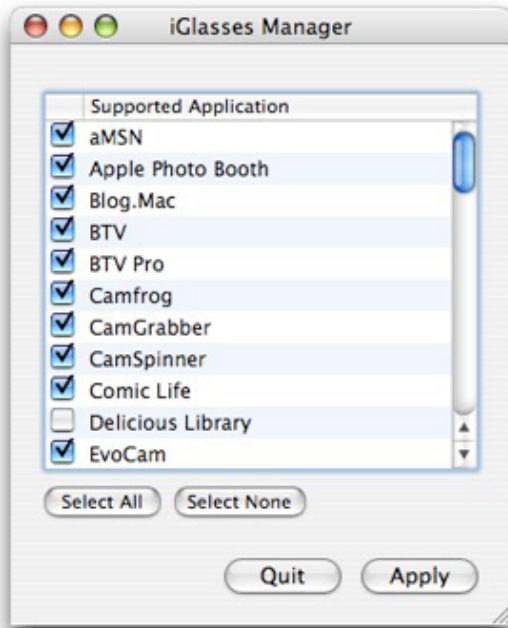
The iGlasses Advanced Settings panel provides zoom, rotate and mirror options.



Rotate can be used to mount an external camera upside down or sideways. Mirror can be used if your camera image is reflected through a mirror. Click Zoom to incrementally zoom in, and to reveal the zoom panel for more options.

iGlasses Manager

iGlasses will appear in dozens of video applications, but sometimes you may want to turn iGlasses off for a particular program. That's where iGlasses Manager comes in. Installed into your Application folder, this tool shows a list of all the iGlasses compatible applications, and lets you uncheck the ones you'd like to disable.



iGlasses and AppleScript

iGlasses Scripting Guide and script examples will be installed into your Applications folder. The Scripting Guide is your reference to writing scripts to control iGlasses.

Note: iGlasses Scripting is only available in Cocoa-based applications. Carbon applications such as EvoCam cannot currently allow scripting of iGlasses.

Using iGlasses with Web-based chats

For Safari:

You'll find the "iGlasses Setting" option in the File menu. This will show the iGlasses window, which should activate when your web-based chat starts showing video.

For FireFox:

First, make sure you have the latest version of FireFox.

If the iGlasses Window doesn't show up in FireFox:

If the applet doesn't provide a menu for selecting video source, go to the Flash settings (Ctrl-Click on the Flash applet and go to Settings), then access the Video settings tab.

Make a note of what the video device is currently set to.

Select iGlasses from the device list. The iGlasses window should appear.

Now, set the device back to whatever it was on originally.

Compatible Applications

iGlasses will show up in the following applications:

Acorn
aMSN
Apple Photo Booth
Arkaos VJ
Blog.Mac
Bookpedia
BTV and BTV Pro
CamCamX
Camfrog
CamGrabber
CamSpinner
CDPedia
Cha-Ching
Comic Life
CoverScout
Delicious Library
DVDpedia
EvoCam 3.5 Preview 1 or higher
Web video via FireFox
Flash Player 9
FlipBook
Freak Show
Funny Photographer
Gamepedia
Gawker
GCam 1.2 or higher
iCamShare
I Can Animate
iChat AV 2.0 or higher
iMovie 4.0 or higher
ineen
iRecord
Iris
iSale
iSpQ 6.3.1 or higher
iStopMotion
iVeZeen
iVisit
jmeeting
Journler
KeyCamX
Marratech
Mercury Messenger
MSN Messenger 8
MulleSight
ohphoneX
ooVoo
Periscope
Pixelmator
PiXiMation
QuickTime Broadcaster
QuickTime Pro Player 7.0 or higher

QuickTime Player X
SAFlashPlayer
SAM Animation
SecuritySpy
SightSpeed
Skitch
Skype 2.0 or higher
SquidCam
vChat
Video Viewer
Web video via Safari
WebcamTweaker
WebEx Meeting Manager
WuffCam
XMeeting
Yahoo! Messenger v2.5.3 and v3.0 Beta

Support and Troubleshooting:

For more information and technical support info, please visit our web site:
<http://www.ecamm.com>

iGlasses Copyright 2010 Ecamm Network, LLC

To communicate with the Apple Remote control, iGlasses uses the AppleRemote library by Martin Kahr. Copyright 2006–2010 martinkahr.com. All rights reserved.

iGlasses Uses APELite, Copyright © 2002–2010 Unsanity LLC

Ecamm Network, LLC is not responsible for any loss or damage to you or your property, including your computer, from use of our software. Any use of this software is at your own discretion and risk and you will be solely responsible for any damage to your computer system or loss of data that may result from its use. You agree to defend, indemnify and hold harmless Ecamm Network, LLC and its employees, from and against all claims and expenses, including attorney fees, arising out this software. YOUR USE OF THIS SOFTWARE IS AT YOUR SOLE RISK. THIS SOFTWARE IS PROVIDED ON AN "AS IS" AND "AS AVAILABLE" BASIS.